

# MARIE CURIE ACTIONS

European Industrial Doctorates  
Innovative Doctoral Programmes

**Vanessa Debiais-Sainton**  
Policy Officer  
Directorate-General for Education and Culture  
Unit C3 - Marie Curie Actions

## MARIE CURIE ACTIONS for an INNOVATIVE EUROPE

Excellence, mobility and skills for researchers



### Towards a smart and knowledge-based society

Marie Curie Actions for  
attractive research careers in Europe

- Promote **mobility** of researchers
- Strengthen **link** between **academia** and **industry**
- Key **skills** matching both public and private sectors



**MARIE CURIE ACTIONS** for an **INNOVATIVE EUROPE**  
Excellence, mobility and skills for researchers




**Some basic about Marie Curie Actions:**

- Addressed to researchers at all stages of their careers
- Open to all domains of research (bottom-up)
- Mobility (international, intersectoral, interdisciplinary)
- Application through competitive calls for proposals
- Selection criteria:  
S&T quality, Training/ToK, Implementation, Impact
- Budget covers generally:  
salary, mobility and research budget for the researcher



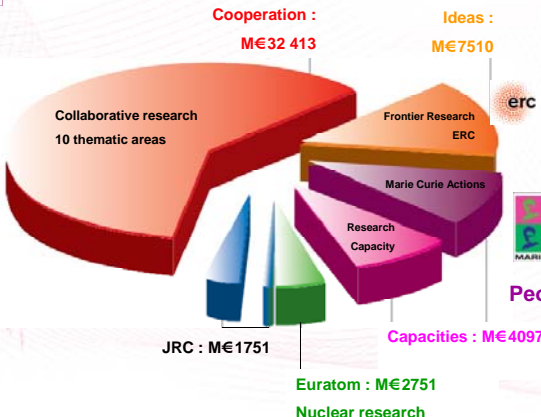
**MARIE CURIE ACTIONS** for an **INNOVATIVE EUROPE**  
Excellence, mobility and skills for researchers




**Where the money comes from?**

Total FP7 budget : M€50 521

FP7 breakdown (€ million) – 2007-2013



Category	Amount (M€)
Cooperation	32 413
Ideas	7 510
People	4 750
Capacities	4 097
Euratom	2 751
Nuclear research	-
JRC	1 751
Collaborative research (10 thematic areas)	-
Frontier Research ERC	-
Marie Curie Actions	-
Research Capacity	-

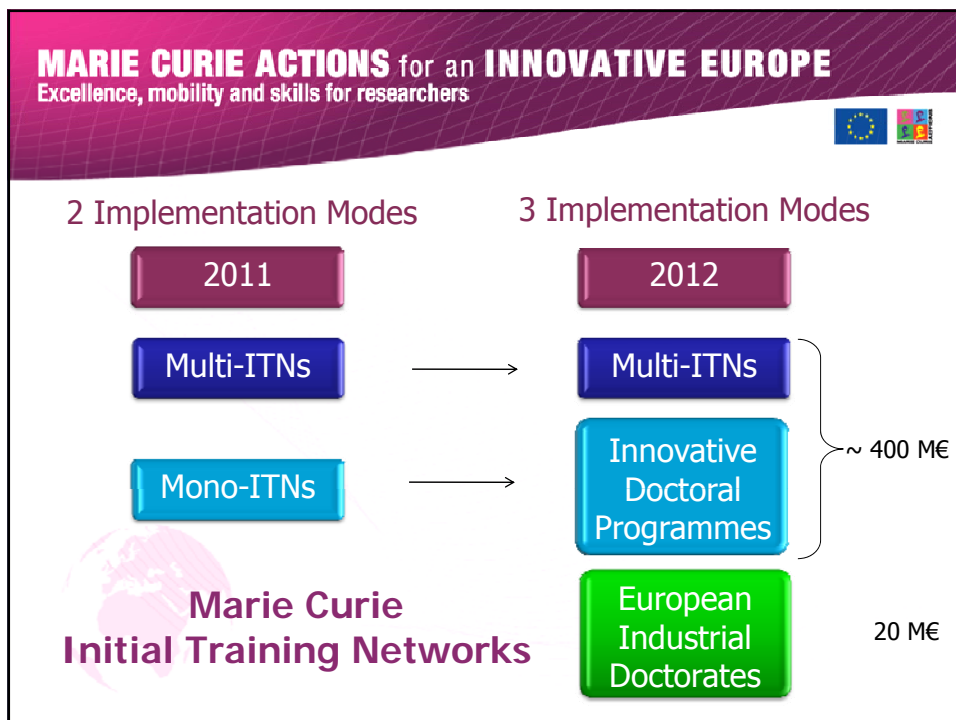
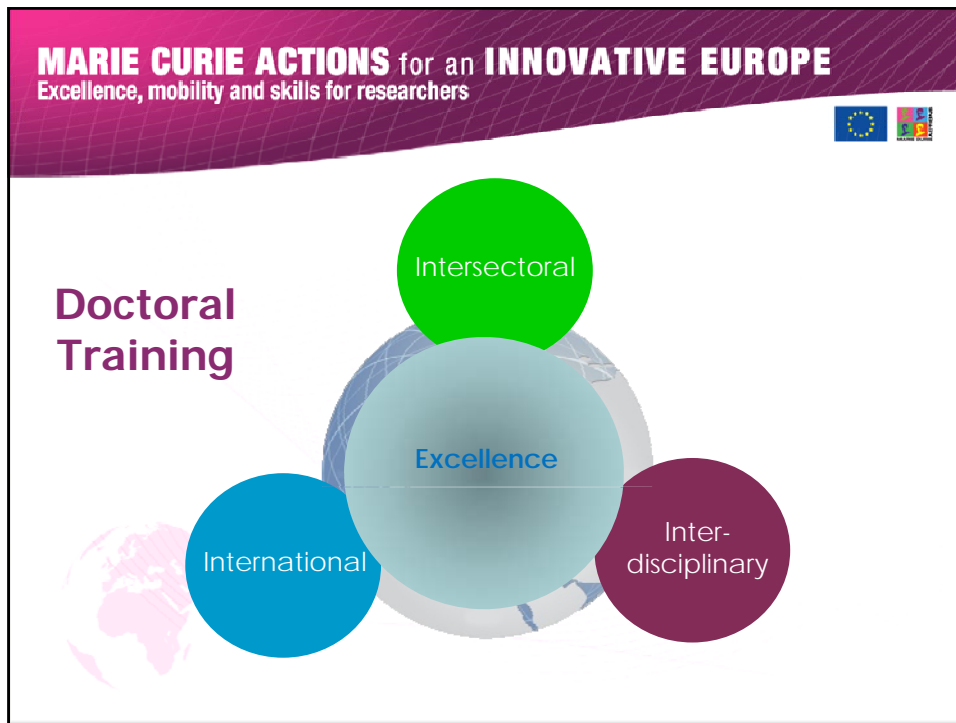


<b>MARIE CURIE ACTIONS for an INNOVATIVE EUROPE</b> Excellence, mobility and skills for researchers		
Marie Curie Action		Objective
<b>Initial training of researchers</b> (1900 M€)	Initial Training Networks (ITN)	Improve career perspectives of early stage researchers in both public & private sector
<b>Life-long training and career development</b> (1170-1400 M€)	Intra-European Fellowships (IEF)	Career development of experienced researchers by e.g.: diversification skills/competencies; integrate a stable position after mobility
	Career Integration Grants (CIG)	
	Co-funding of regional, national, international programmes (COFUND)	
<b>Industry dimension</b> (250-450 M€)	Industry-Academia Partnerships and Pathways (IAPP)	Open and foster dynamic pathways between public research organisations and private commercial enterprises
<b>International dimension</b> "World fellowships" (1170-1400 M€)	International Outgoing Fellowships (IOF)	Reinforce extra-European dimension of the ERA through mobility through training, knowledge transfer and cooperation
	International Incoming Fellowships (IIF)	
	International Research Staff Exchange Scheme (IRSES)	

**MARIE CURIE ACTIONS for an INNOVATIVE EUROPE**  
 Excellence, mobility and skills for researchers

The Marie Curie Actions support 3 of the 7 flagship initiatives of the Europe 2020 strategy for smart/sustainable/inclusive growth:

- 
**Innovation Union**
  - ✓ 1 million new research jobs needed
  - ✓ attract and **train young people** to become researchers
  - ✓ quality **doctoral trainings**, with **businesses involvement**
  - ✓ offer internationally competitive research careers
  - ✓ attractive employment conditions and gender balance
- 
**Youth on the move**
  - ✓ mobility of researchers across countries, disciplines & sectors
- 
**An agenda for new skills and jobs**
  - ✓ better skills for better jobs



**MARIE CURIE ACTIONS for an INNOVATIVE EUROPE**  
Excellence, mobility and skills for researchers

**Multi-ITNs**

- At least 3 participants + associated partners, from different countries, sectors and disciplines
- Short-term secondments of ESRs
- Networking activities
- Equip ESRs with innovative skills (scientific and transversal skills)

**MARIE CURIE ACTIONS for an INNOVATIVE EUROPE**  
Excellence, mobility and skills for researchers

**Innovative Doctoral Programmes**

- 1 participant + associated partners from different countries, sectors and disciplines
- Innovative training programme addressing the triple 'Y' dimensions
- Equip doctoral candidates with innovative skills (scientific and transversal skills)
- Quality and quantity of supervision of doctoral candidates

**MARIE CURIE ACTIONS for an INNOVATIVE EUROPE**  
Excellence, mobility and skills for researchers

European Industrial Doctorates

Country 1 University /Laboratory Industry Country 2

≥ 50%

University or Industry

**Objectives**

- Involve companies in doctoral training
- Develop innovative aptitudes and entrepreneurial mindsets
- Improve the employability and career perspectives of doctorate holders
- Strengthen the cooperation between universities and companies

**MARIE CURIE ACTIONS for an INNOVATIVE EUROPE**  
Excellence, mobility and skills for researchers

European Industrial Doctorates

Country 1 University /Laboratory Industry Country 2

≥ 50%

University or Industry

**Structure**

- 2 participants (1 from each sector) + possible associated partners
- Each researcher must:
  - ✓ be enrolled in a **doctoral programme**
  - ✓ be employed by at least one of the participants
  - ✓ spend at least **50%** of the time in **private sector**
  - ✓ be jointly supervised by both participants
- 1 to 5 researchers / project

